

Updating Galactio Map

** This document outlines the process to update your Galactio V8 Maps from your PC.*

Unpacking and getting ready for the update

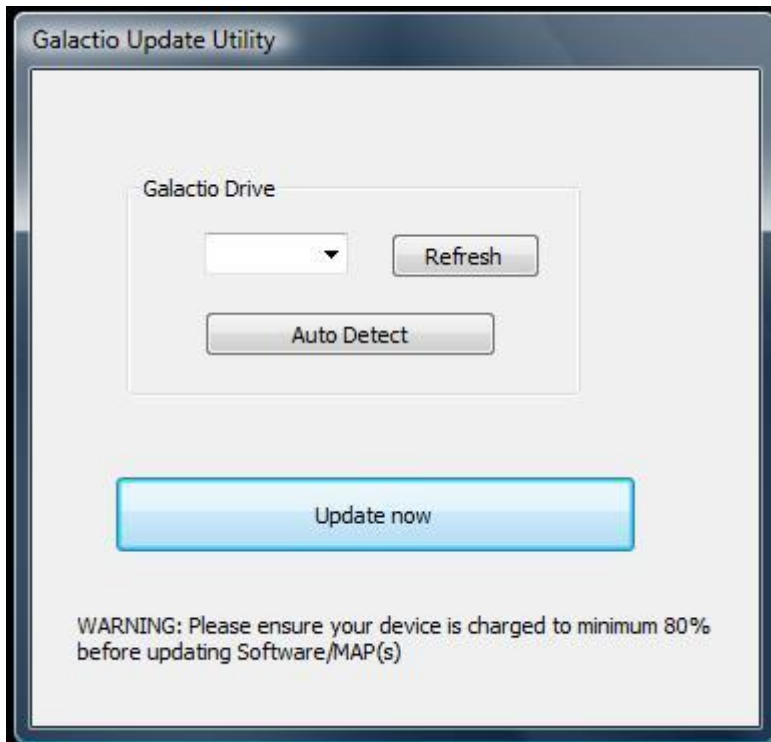
Note:

If your device model is 61/62/6210/6210+/62 Pro, please skip 4 and 5, take out SD card from device and use SD card reader to connect to PC/laptop for updating the software.

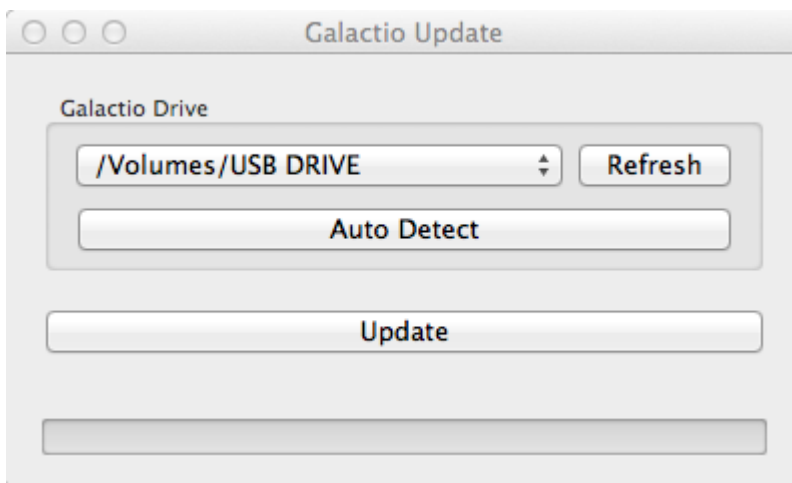
This map version is only compatible for software version 8.7.00 and later. If your current software version is below 8.7.00, please update the software first.

1. Download the update package from www.galactio.com/download.html
2. Unzip the update package on the PC.
3. Go to the unzipped folder from Step 2.
4. Ensure your device is charged to a minimum of 80% battery level before attempting to update the device.
5. Connect the device to your PC
6. To start updating:
 - PC's running Windows Vista/Windows 7*
 - Run **Update_Galactio.exe** from the unzipped package folder.
 - PC's running Windows XP*
 - Run **Update_Galactio_XP.exe** from the unzipped package folder.
 - Mac OSX*
 - Run **Galactio Update (Mac).app** from unzipped package folder.

The following screen will show up:



Windows Version



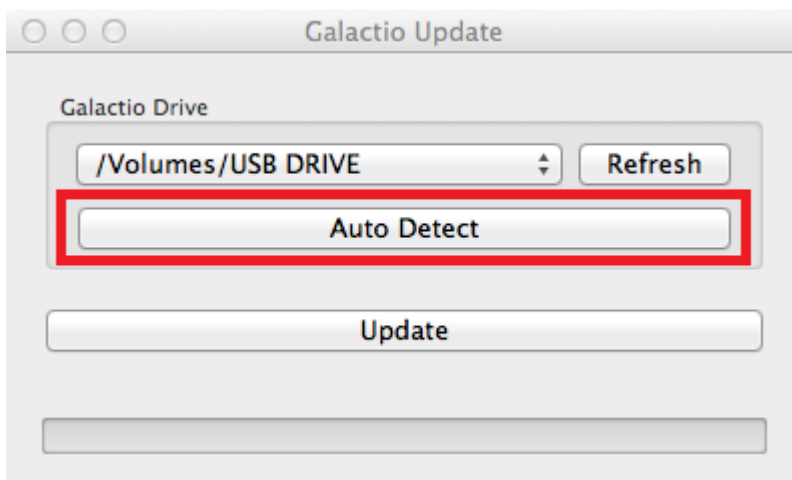
Mac Version

Setting the Drive for Galactio

1. Press Auto Detect to allow the software to detect the drive where Galactio is connected.



Windows Version (Auto Detect)

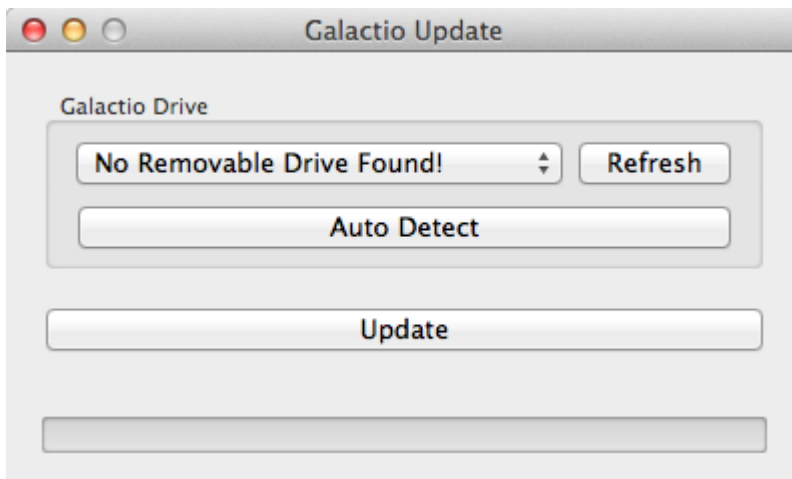


Mac Version (Auto Detect)

2. In case the Update Software is unable to find the drive, the following message will show up:
NOTE: If your device is recognized, please skip to Step 4.



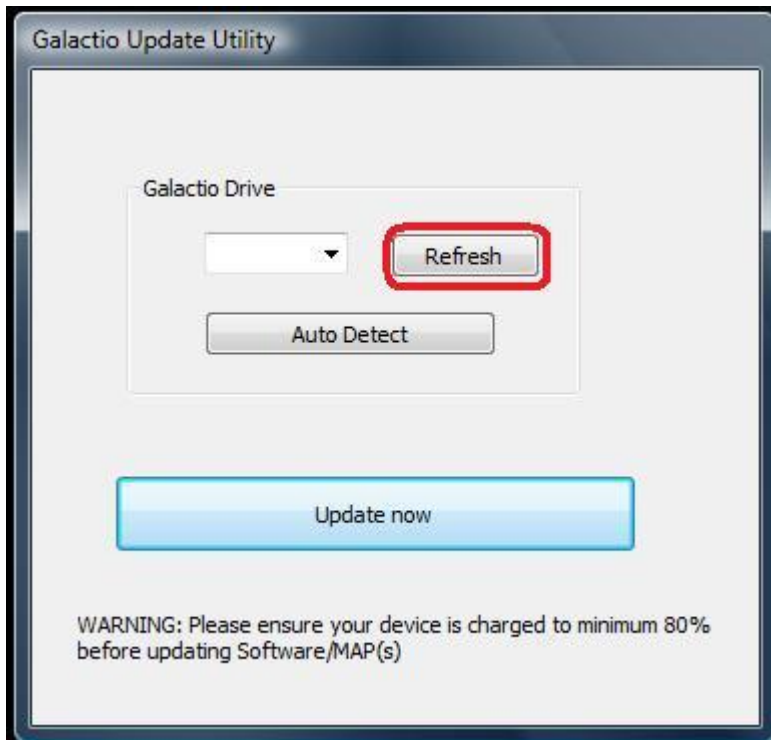
Windows Version (Device Not Found)



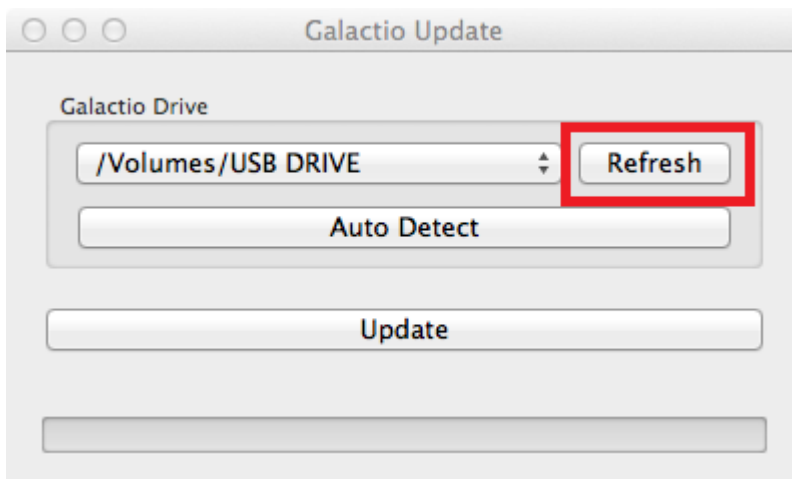
Mac Version (Device Not Found)

The device may not be connected properly, or may be powered off.

3. Ensure the USB cable is connected between the PC and device, and device is powered on. Now, press **Refresh** button, followed by **Auto Detect**.

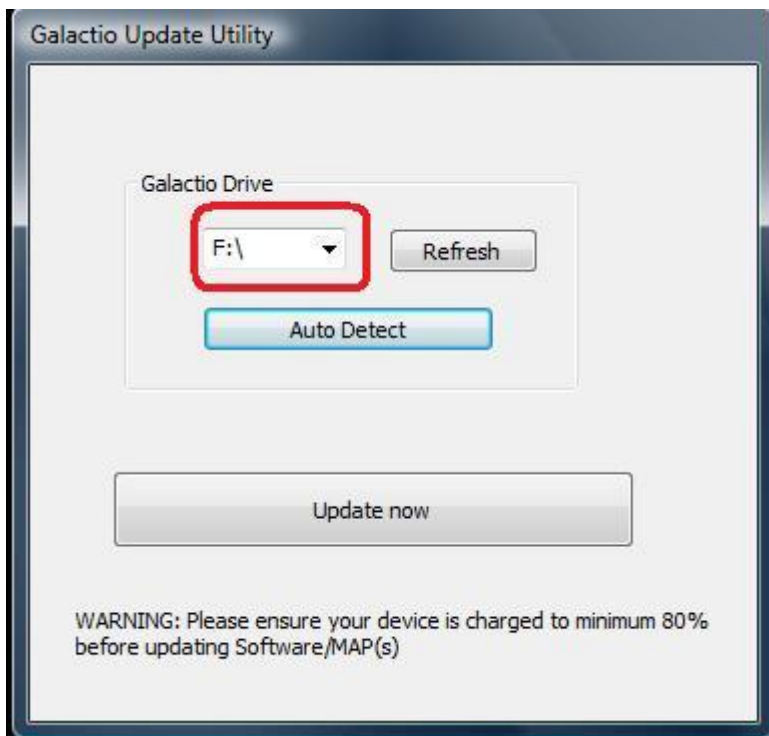


Windows Version (Refresh)

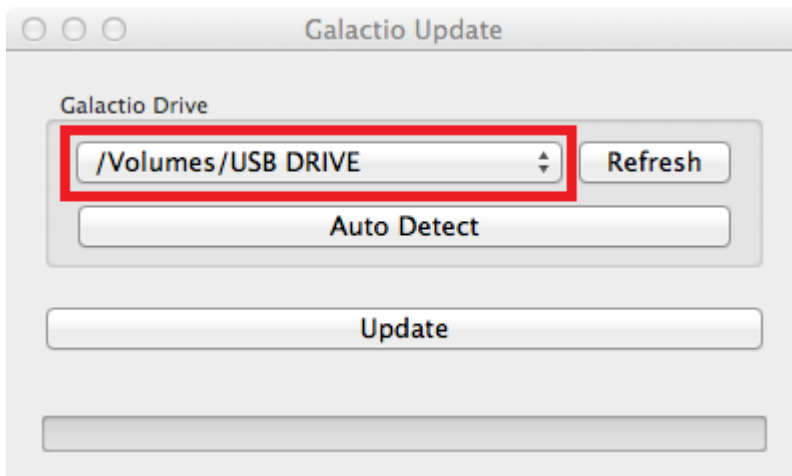


Mac Version (Refresh)

4. On recognizing the device, the appropriate drive will show up:

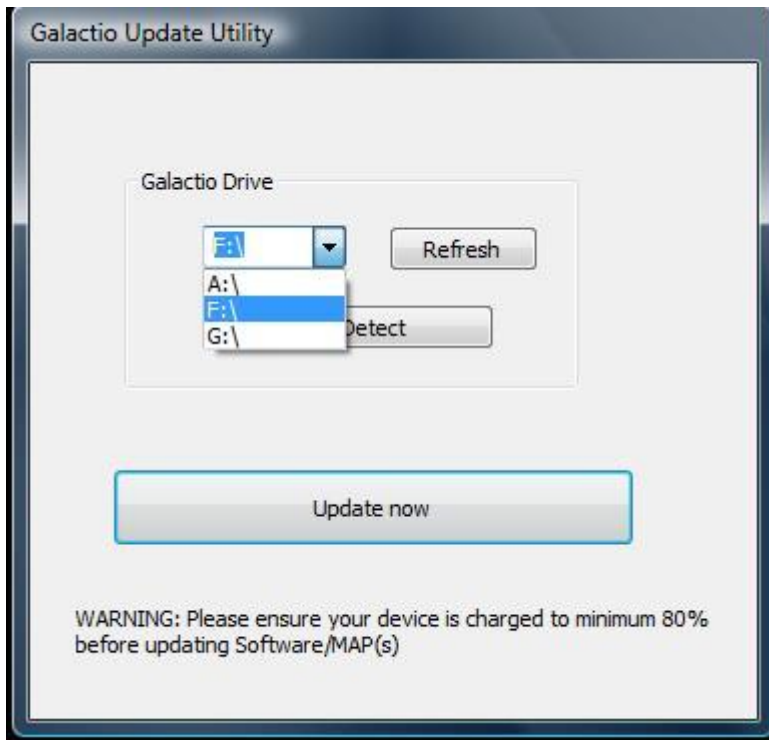


Windows Version (Manual Drive Selection)



Mac Version (Manual Drive Selection)

5. The user may select the drive by clicking on the drop down box next to “Refresh” button

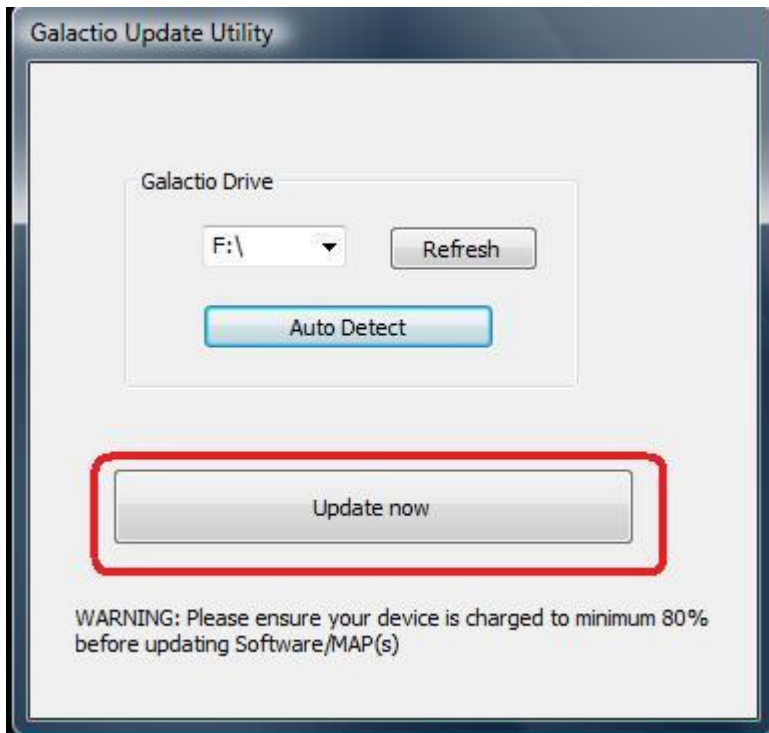


NOTE: User selection of Drive is not advised, unless user is sure of the device and PC configuration(s)

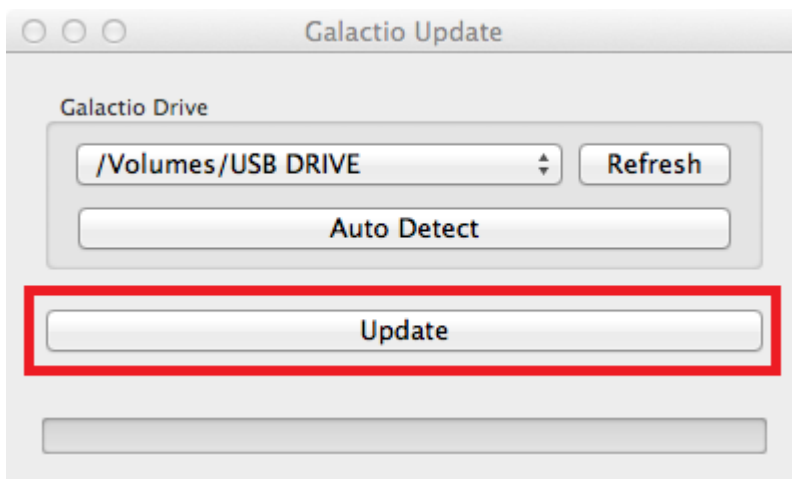
Updating the device

After successful connection and drive selection, you are ready to start the update.

1. Press “**Update Now**” to start the update.



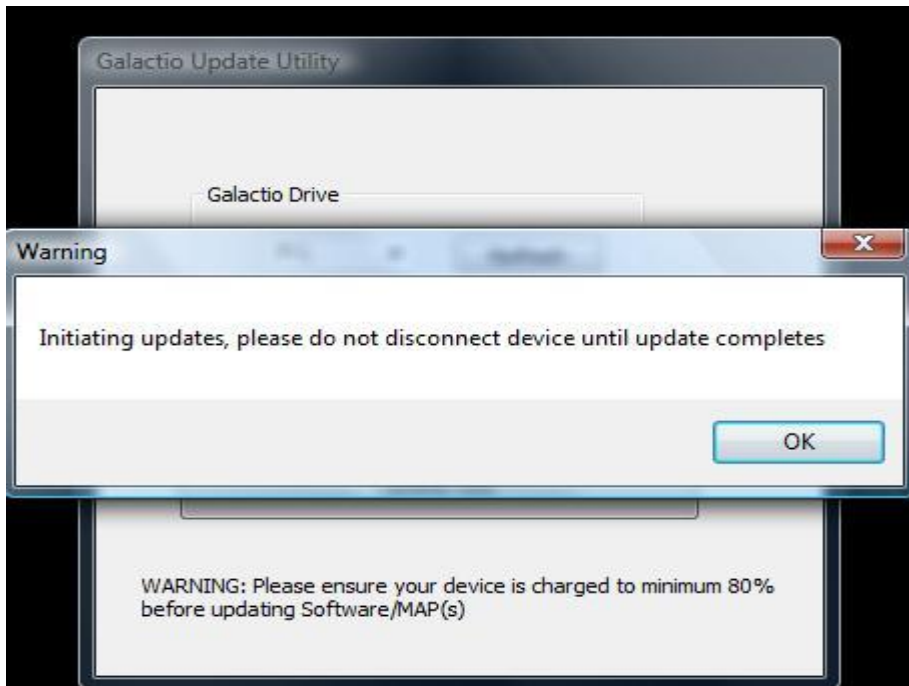
Windows Version (Update)



Mac Version (Update)

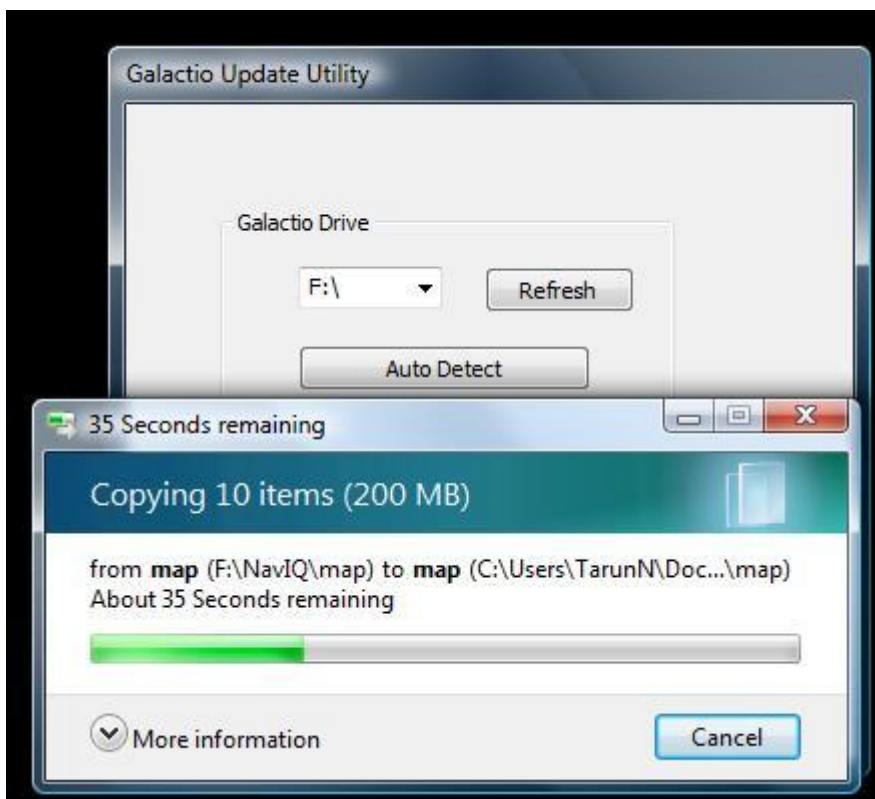
NOTE: The update may take several minutes to complete. Please do not remove the USB cable from the device/PC during this time, or shut down your PC.

2. The following warning will show up, Press "OK" to continue

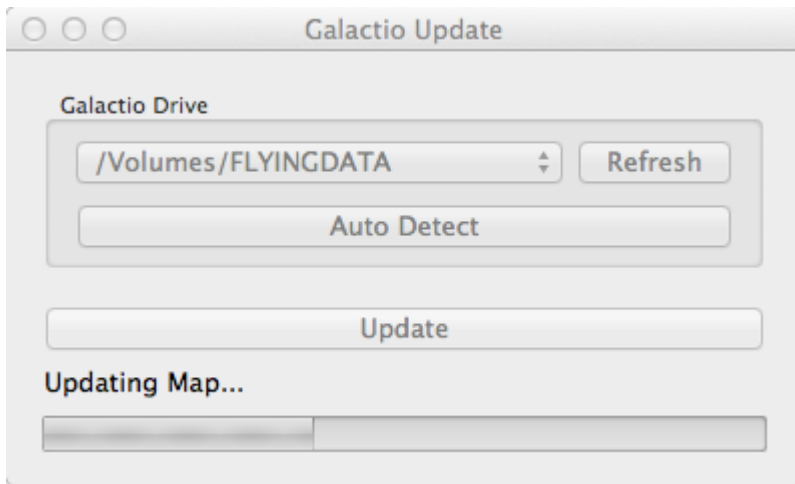


This message box will be appeared only in Windows version.

3. Multiple progress bars may show up during the update:

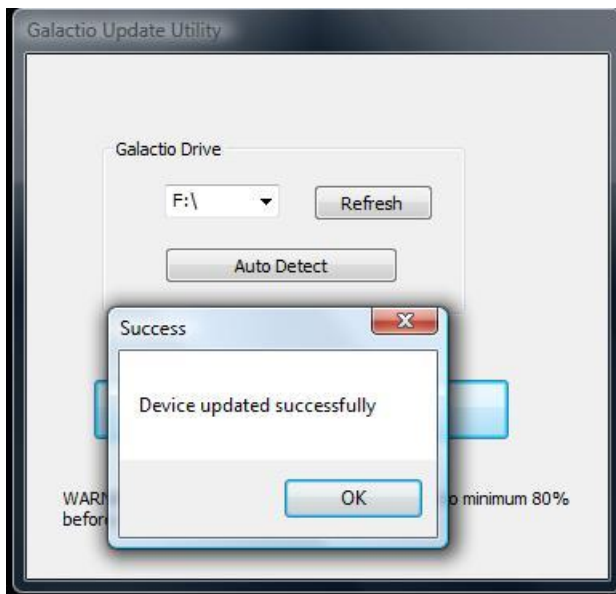


Windows Version (Updating in Progress)

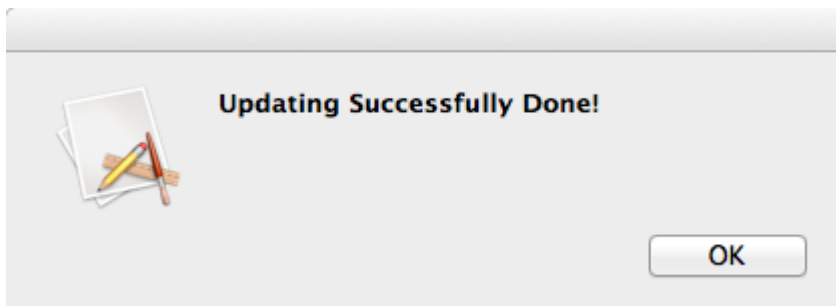


Mac Version (Updating in Progress)

4. On Successful update, the following message will show up:



Windows Version (Successfully Updated)



Mac Version (Successfully Updated)